

Where are the railways going - the direction for JC in EU railways

Kim DREWS | ERA Safety & Operations Unit
Austro Control | 14 September 2023
kim.drews@era.europa.eu



EUROPEAN
UNION
AGENCY
FOR RAILWAYS

OUR VISION

A sustainable, safe European
transport system without frontiers.



SAFETY FIRST...

Rail is connecting people and delivering goods efficiently, reliably and safely ... but there are still catastrophic accidents.

- The safety level of rail in Europe has improved at impressive pace over the past decades, and the railway industry can be proud of its achievements – of which most has been achieved through advances in technology.
- Migrating towards Safety Management Systems - need for strong safety leadership and for an environment that has a positive safety culture.
- Human and Organisational Factors (HOF) plays a significant role in all catastrophic railway accidents and occurrences.
- (Cyber-)Security is a rising threat.

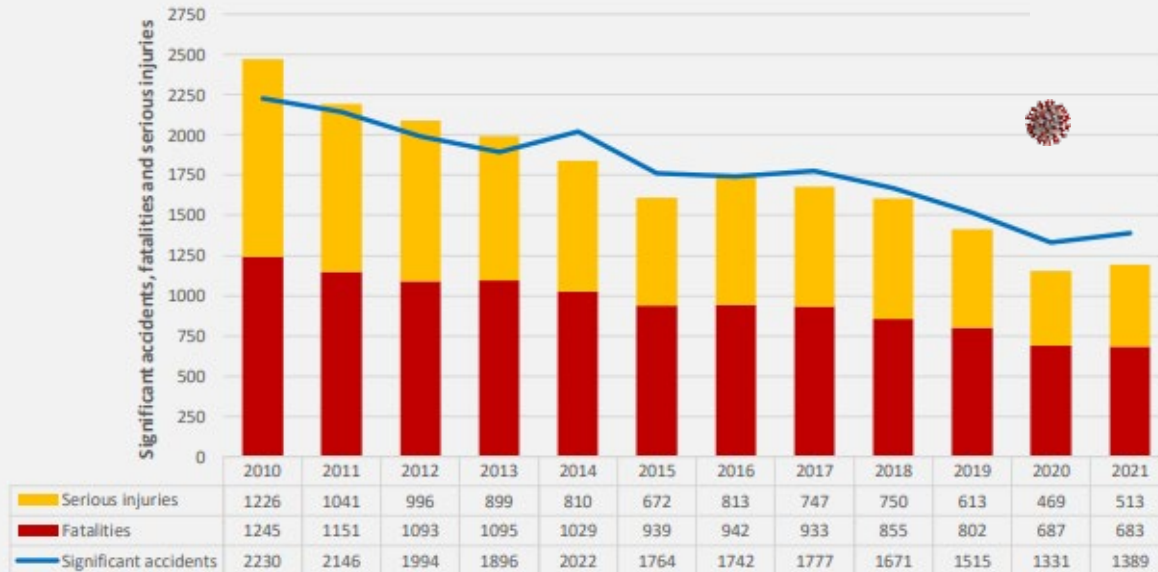


Safety performance in the European Union

Significant accidents and resulting casualties have decreased steadily since 2010, with the lowest values ever recorded in 2020 (i.e. 1331 significant accidents, 469 serious injuries and 687 fatalities).

Figure 2 - Main safety outcomes (EU-27, 2010-2021)

Significant accidents, fatalities and serious injuries



Source: Common Safety Indicators (CSIs) as reported by National Safety Authorities (NSAs) to the Agency

-40,32%

Decrease in significant
accidents in 2020 compared
with 2010



ERA'S VIEW

Positive European Safety Culture

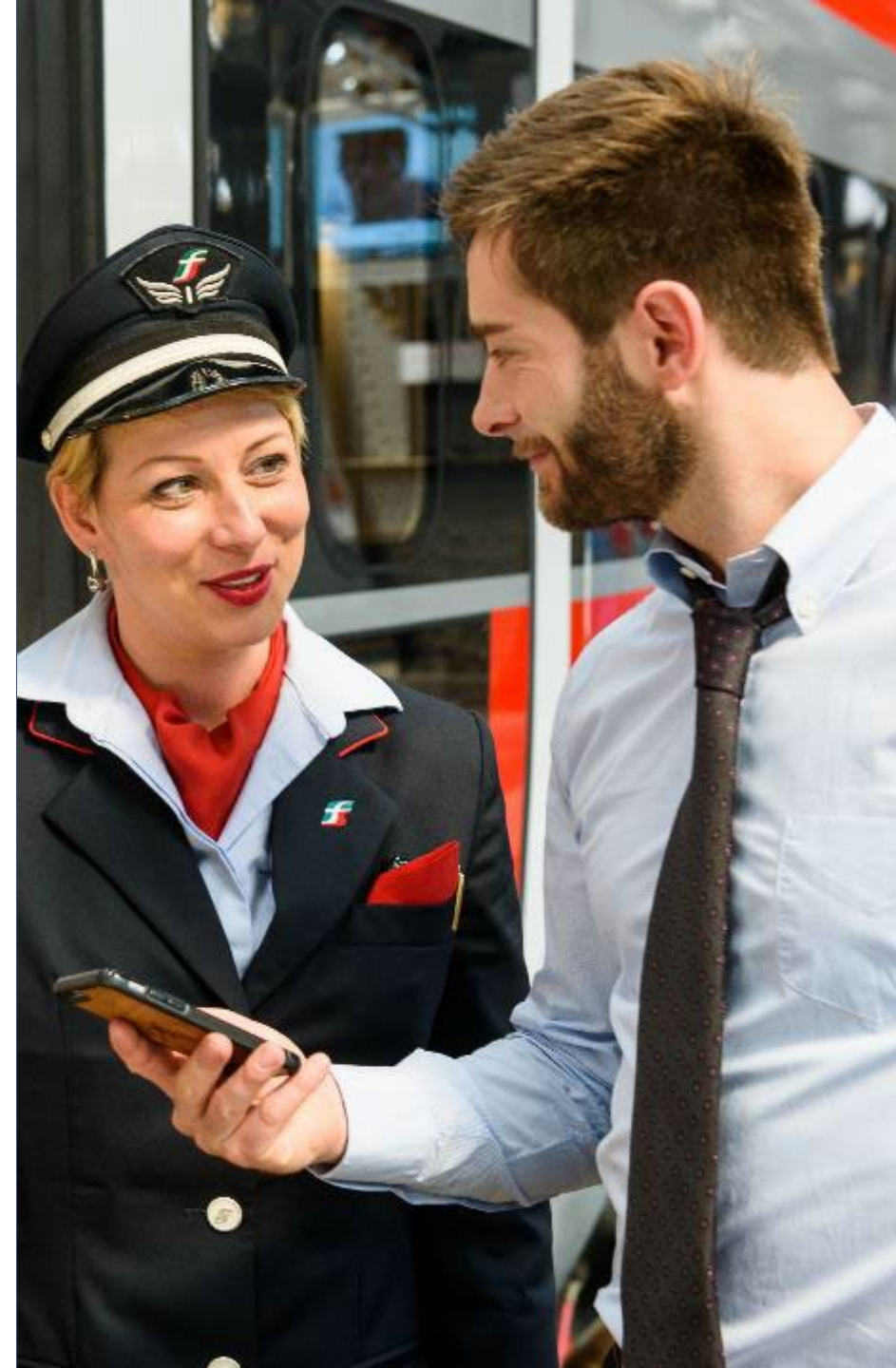
A positive safety culture will be needed throughout the European railway system in order to overcome the challenges.

The safety culture refers to the interaction between the requirements of the Safety Management System (SMS), how people make sense of them, based on their attitudes, values and beliefs, and what they actually do, as seen in decisions and behaviours.

In many high-risk domains tackling organisational and cultural aspects has become paramount to enhancing safety. The success of safety culture in those industries has convinced rail leaders and law-makers to embrace this philosophy across Europe.

SAFETY CULTURE

How ERA is supporting the development of a positive safety culture

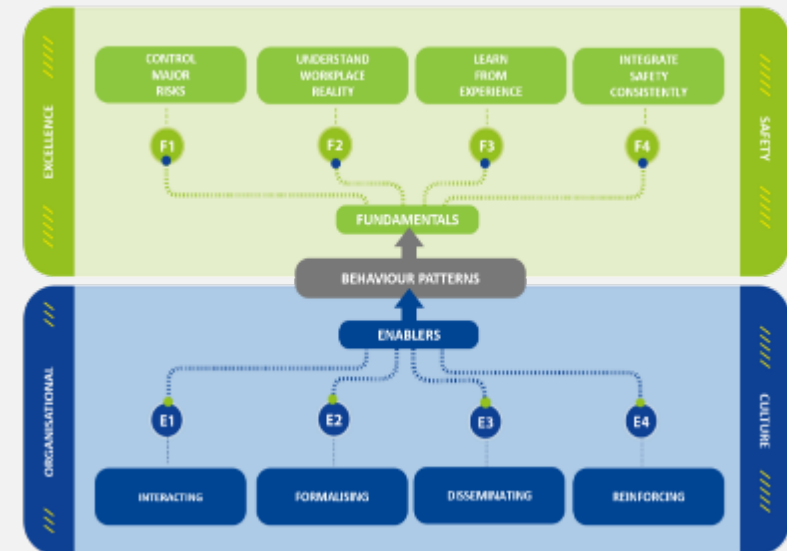




Safety Culture Programme

Strategy

To devise dissemination and evaluation instruments to support the development of a positive railway safety culture across the EU



DEVELOPING A POSITIVE SAFETY CULTURE



European Railway Safety Culture Declaration (+250 signatories)



Safety Leadership and Just Culture training



HOF and Accident investigations training



Safety Culture Oversight training for safety authorities and inspectors



European Rail Safety Climate Survey (ERA-SCS)



Safety Culture Peer Reviews

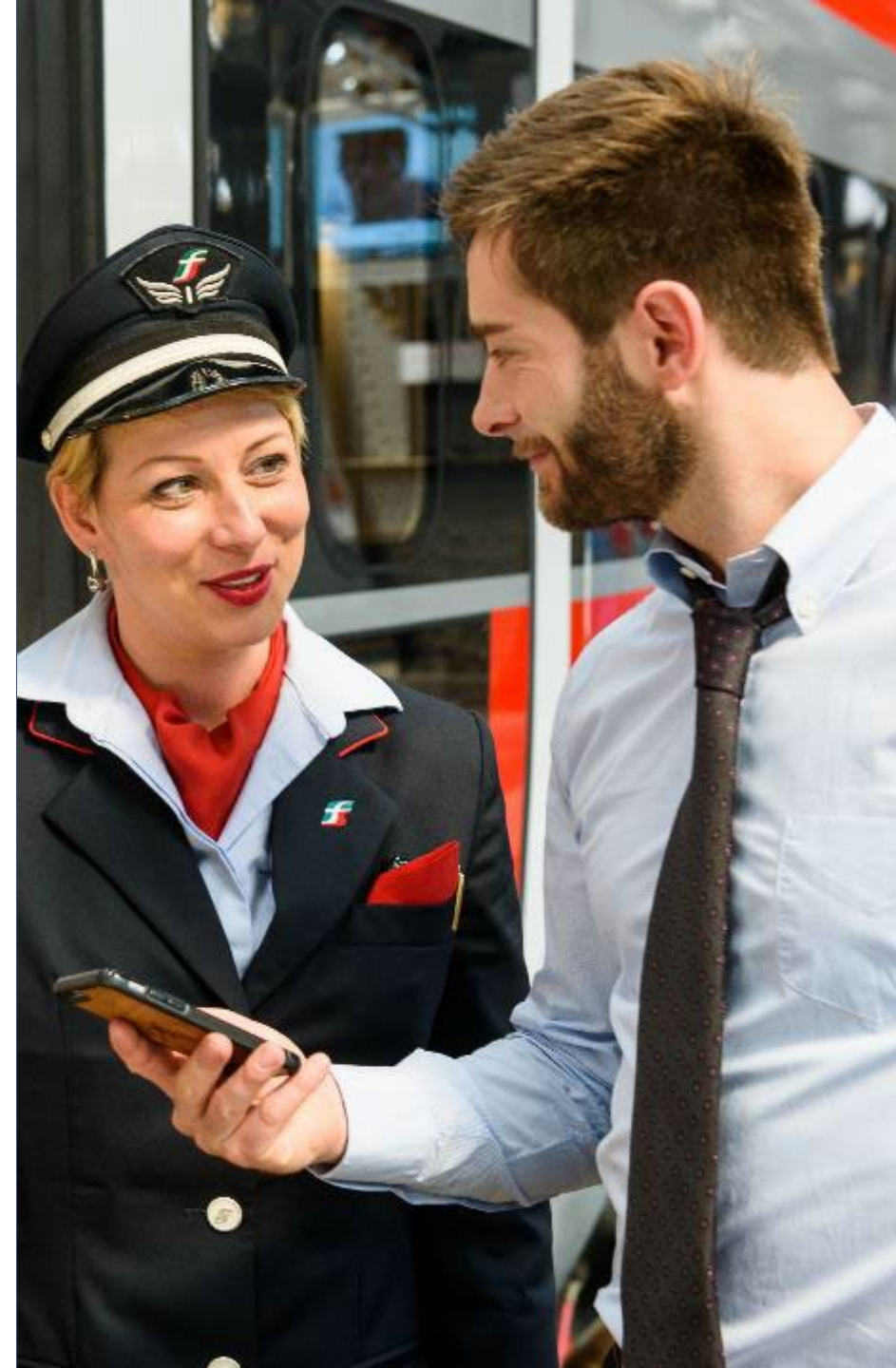


European Rail Safety Days. 20-22 Sept. Tallinn, Estonia



Organisational Just Culture Training

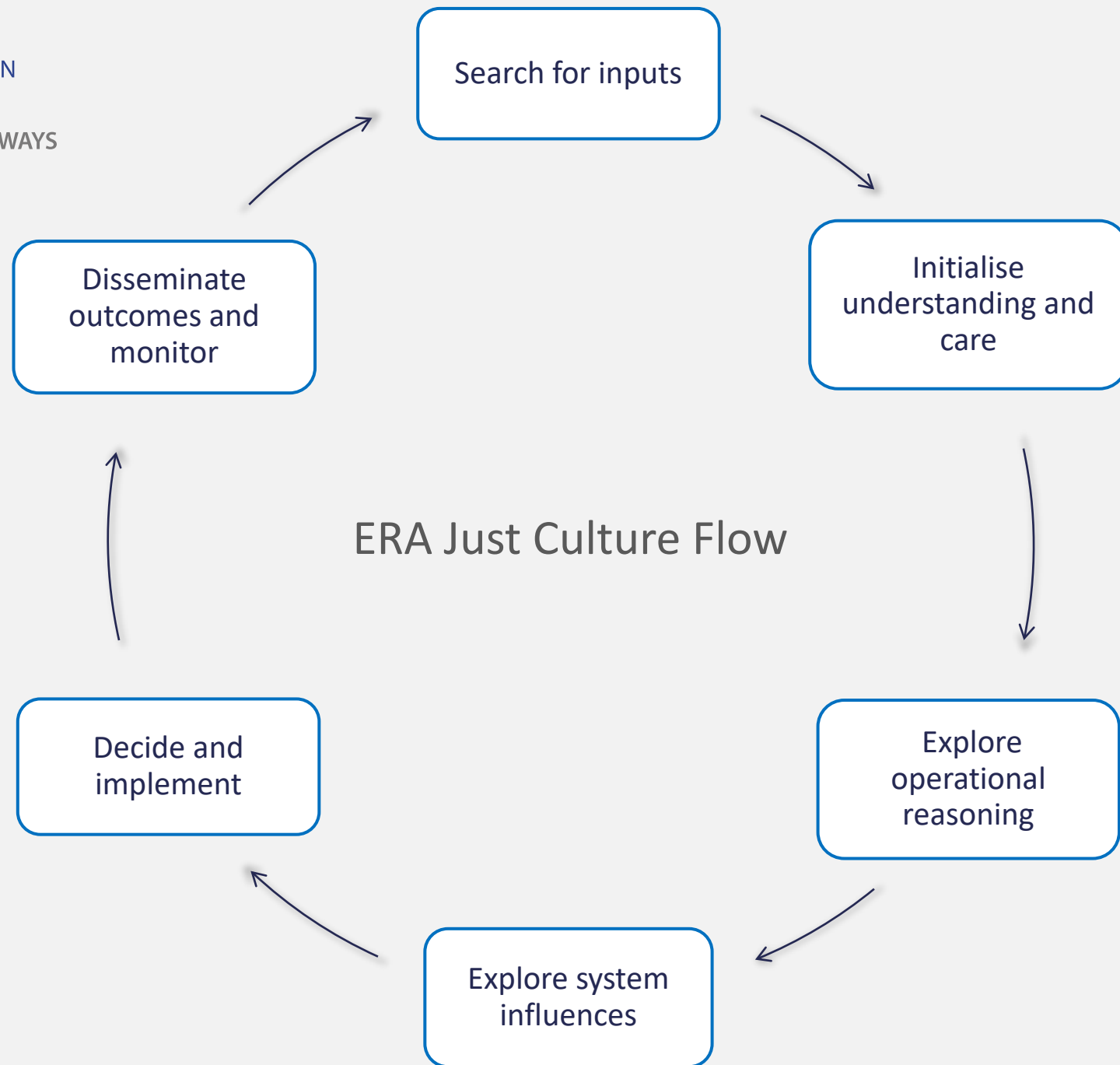
How ERA is supporting the development of Just Culture within EU Railways



Organisational Just Culture training

- Online training sessions, open to all stakeholders
- Online and onsite training for individual organisations
- Qualifying of NSA trainers, to disseminate in MS







To summarize

- Safety levels have improved
- A positive Safety Culture including Human & Organisational Factors and Just Culture are the next steps in the development
- Continued development of ERA activities supporting all stakeholders with understanding and implementation

An aerial photograph of a large port facility. In the foreground, a long train of blue flatcars is parked on tracks. To the right, numerous shipping containers are stacked, with some labeled 'SAMSkip' and 'CMA CG'. A green tanker car with 'TRANESA' written on it is visible. In the background, yellow port cranes and a city skyline are visible under a clear sky.

THANK YOU

kim.drews@era.europa.eu

Moving Europe towards a sustainable and safe railway system without frontiers.

Follow us:

